

BADIN is an atelier making energetic landscape architecture supported by maps and topical research.

Project: Regional Landscape Studies
Collaboration: Gemeente Amsterdam
Status: Map
Site: Amsterdam
Map EPSG: 28992
Year: 2017



Project: Reed, Heat, Sleep, Repeat
Program: Housing, Agriculture
Status: Preliminary Design, Academy
Site: Amsterdam/Zaandam
Year: 2018



ibid.; left to right: phase 0, 1, 2



ibid.; planting to counter Arundo Donax (biomass crop)



Cupressus leylandii



Populus nigra 'italica'



Aegopodium podagraria



Symphytum officinale



Urtica dioica



Galium aparine



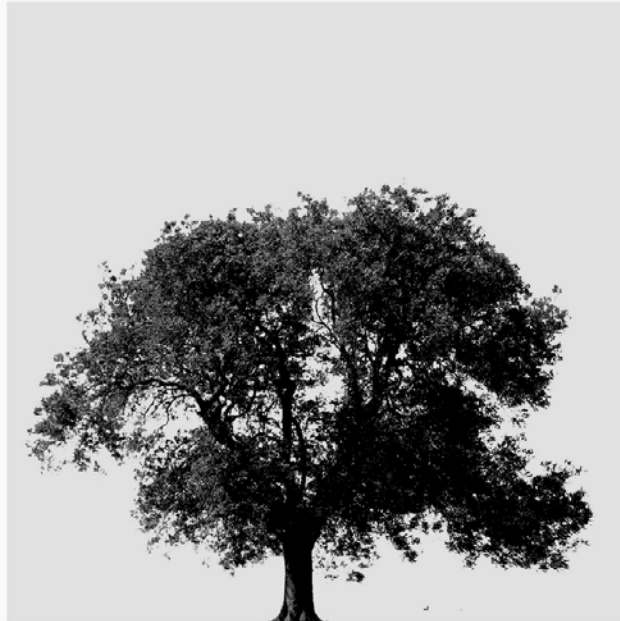
Antriscus sylvestris



Angelica sylvestris



Taxodium dystichum



Fraxinus excelsior



Hypochaeris radicata



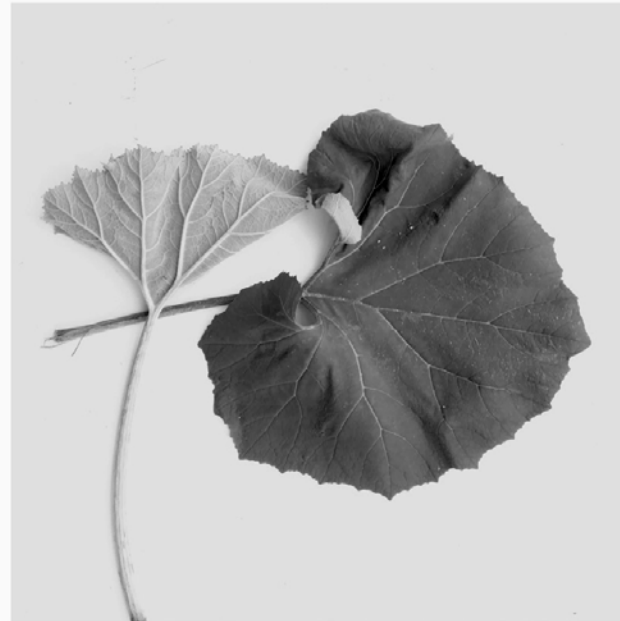
Glechoma hederacea



Silene conica



Poa compressa/pratensis



Arctium lappa



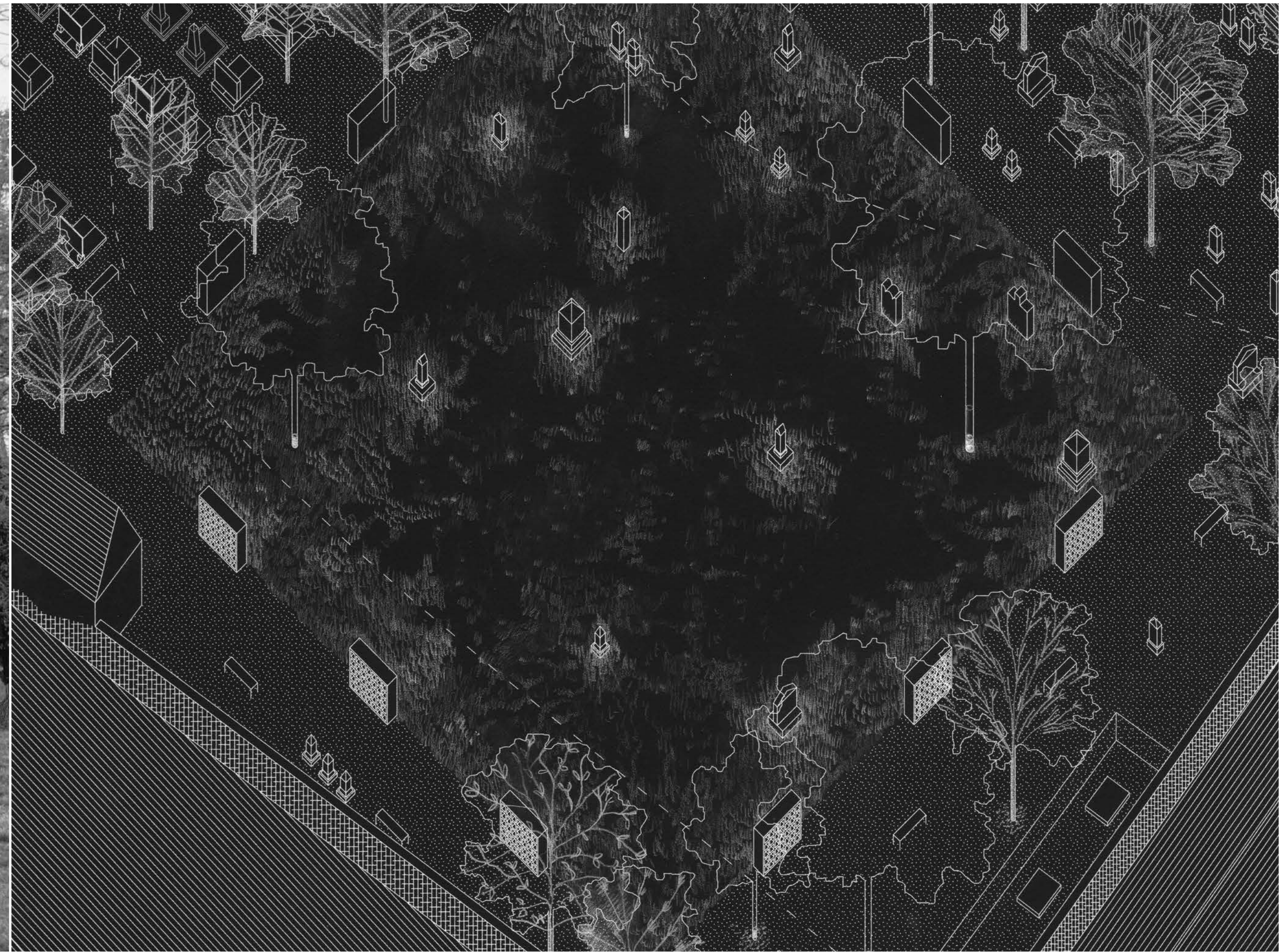
Ranunculus acris

Landscape architecture is combining energy embedded in a site with a (new) program.
A shape results. The shape should be simple. So it preserves its energy. Then time shapes it.

Research is seeing landscape architecture with the eyes of a different topic. A fascination helps.
Randomness too. Answering questions opens new ones. Theory leads to practice and vice versa.

Maps are uncovering worlds hidden from human perspective. They merge fables with fact in precision.
Landscape produces these fables and facts. So maps document them and prepare an underground drawing.

Project: Lapidarium
Collaboration: Barbora Haviarová
Program: Cemetery extension
Status: Sketch Design, FA STU
Year: 2013 - 2019



Project: Horizon
Collaboration: Stijn Dries
Program: Infrastructure: Water-Retention
Status: Competition, Verdien-Model
Site: Drenthe, Netherlands
Year: 2019



Project: Z000F - Zoo of the Future
Client: Stimuleringsfonds
Collaboration: David Habets
Status: Research by Design
Year: 2018 - ongoing

rocks are alive

oilfields breed

meteors are gardens

islands get born

clouds fall

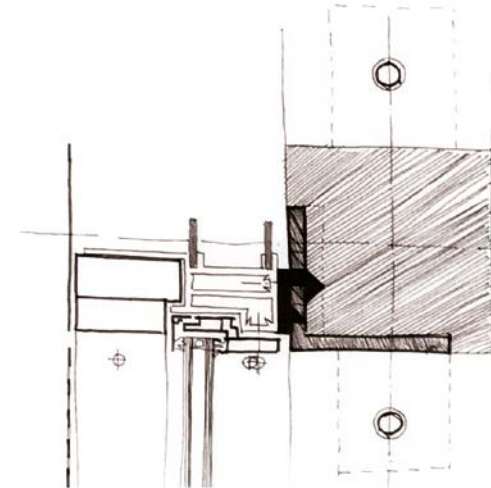
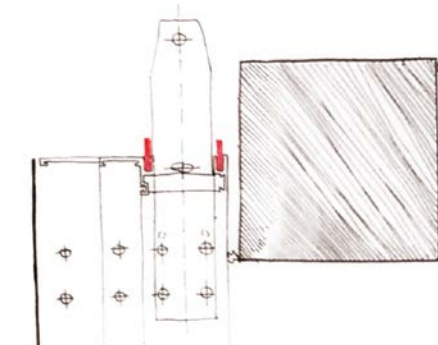
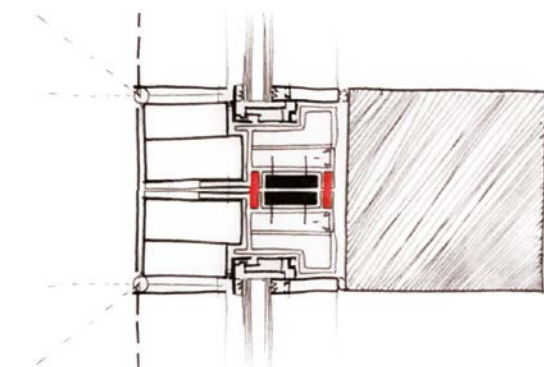
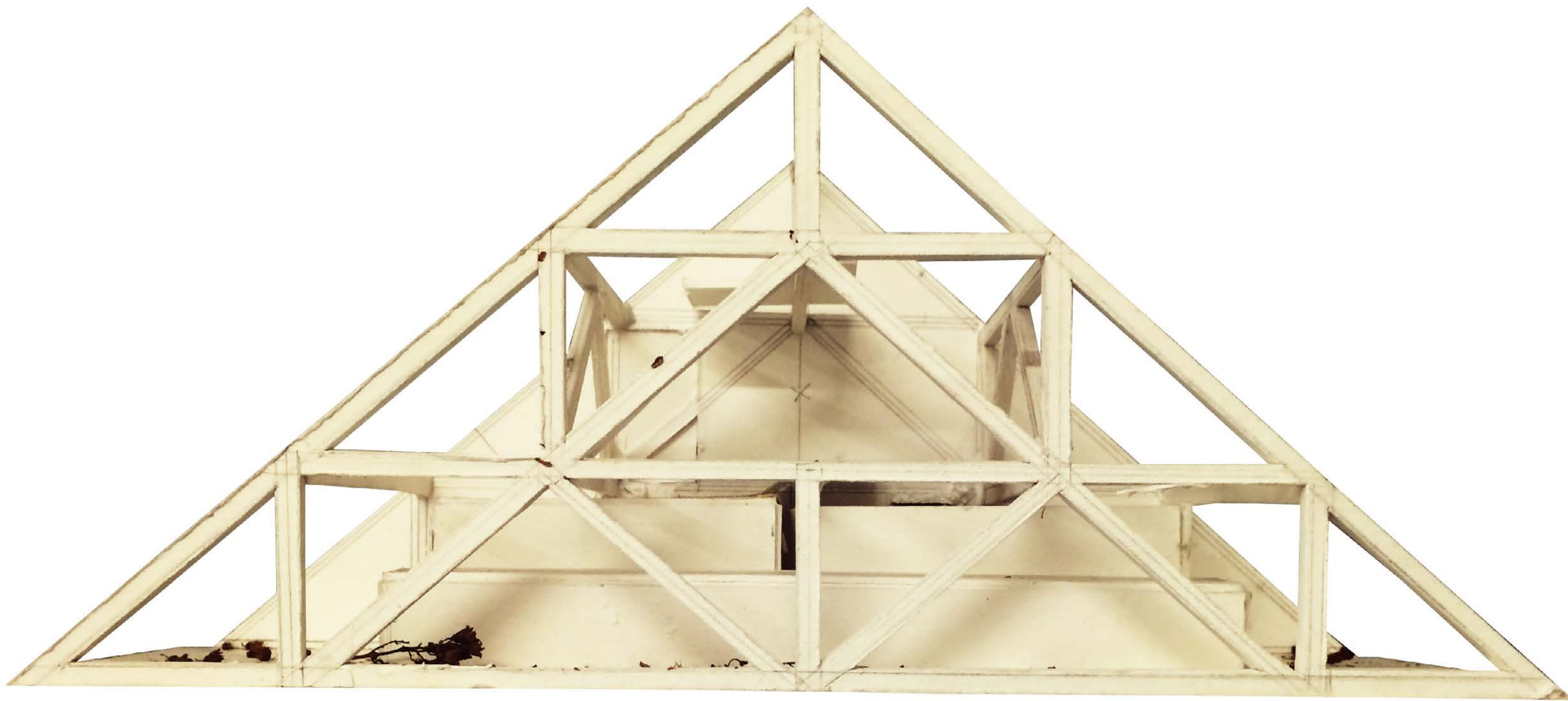
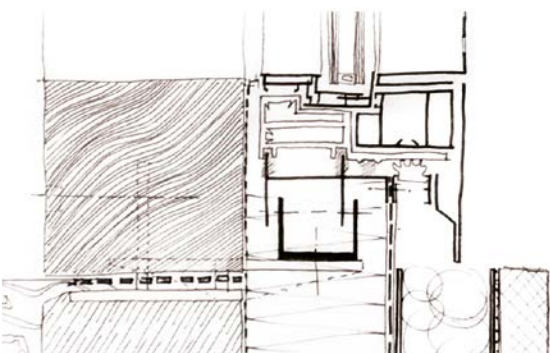
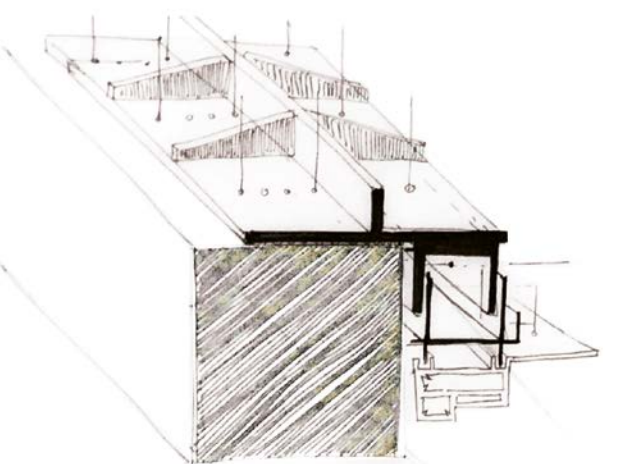
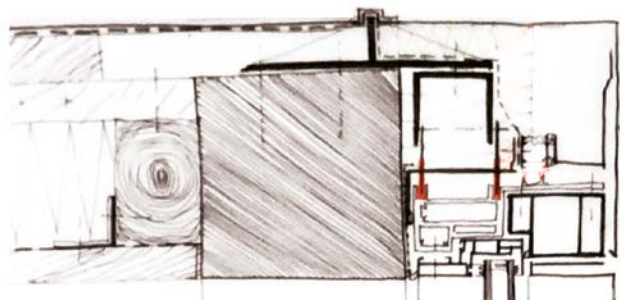
corals are smoking

horizon disappears

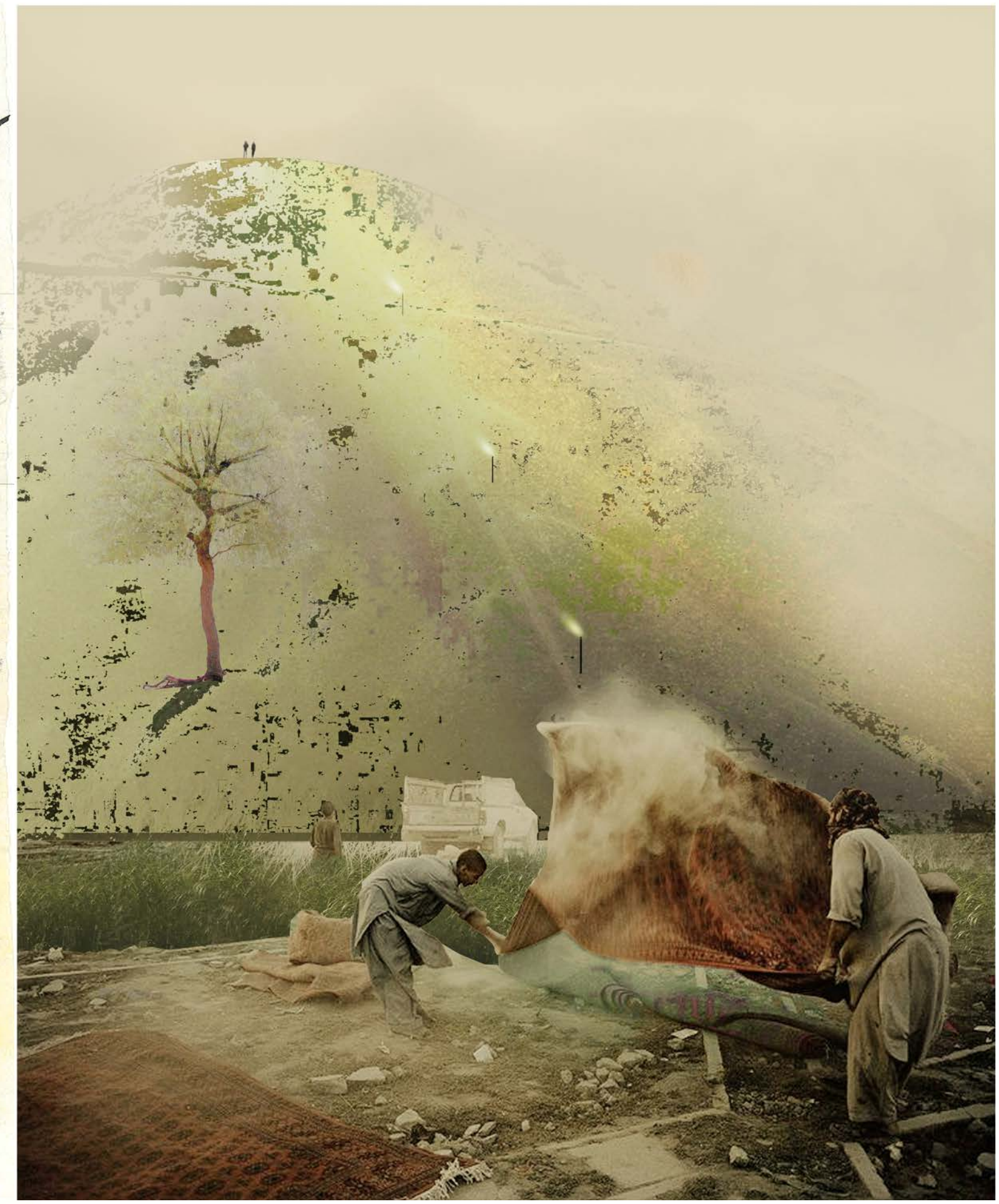
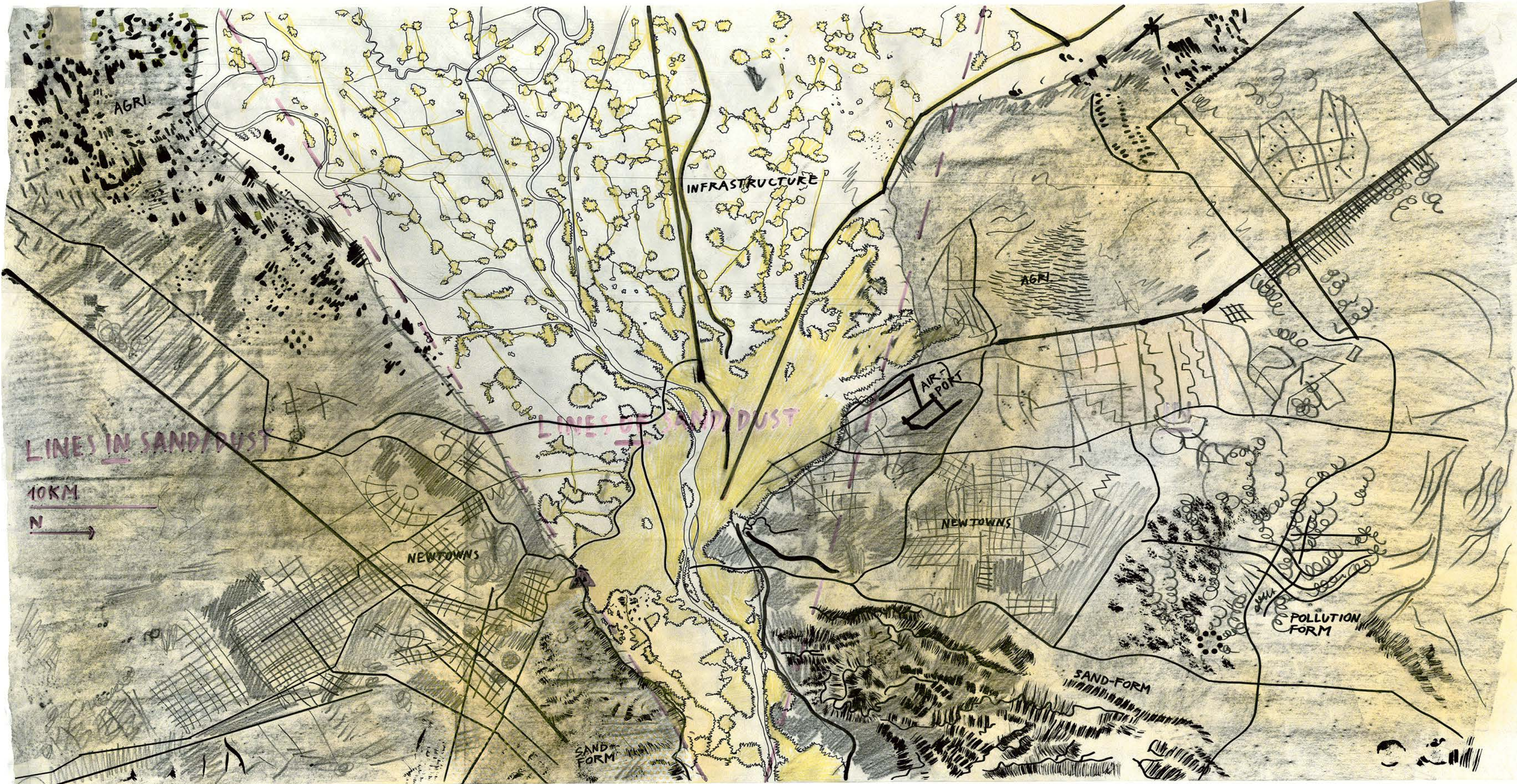
rocks are alive.

Unearth life is extreme,

Project: Hasegawa on a Walk
Program: Permanent Kiosk
Status: Definitive Design, Academy
Site: Amsterdam
Year: 2016



Project: Dust Topography
Program: Landfill, Park
Status: Map and Projection, Academy
Site: Cairo, Egypt
Map EPSG: 6312
Year: 2017



BADIN was founded in 2018 and is led by Andrej Badin. Landscape architecture studies:
Slovak University of Technology, Amsterdam University of the Arts.

©

All the contents displayed in this pdf are the intellectual property of BADIN and should not
be used, published or copied without the atelier's permission.

contact: +31 6 82 23 50 33